



COMMONWEALTH OF KENTUCKY
TRANSPORTATION CABINET
www.transportation.ky.gov/

Andy Beshear
GOVERNOR

Jim Gray
SECRETARY

May 11, 2022

CALL NO. 100
CONTRACT ID NO. 221323
ADDENDUM # 2

Subject: Jefferson County, NHPP 0711 (126)
Letting May 26, 2022

- (1) Revised - Notes - Pages 58, 96, 115 and 117
- (2) Added - Sheets - Pages 129(a)-129(c)
- (3) Revised - Proposal Bid Items - Pages 205-207(a) of 207

Proposal revisions are available at <http://transportation.ky.gov/Construction-Procurement/>.

If you have any questions, please contact us at 502-564-3500.

Sincerely,

Rachel Mills,

A handwritten signature in cursive script that reads "Rachel Mills".

Rachel Mills, P.E.
Director
Division of Construction Procurement

RM:mr
Enclosures



I-71 Rehab Plan - Scale 1" = 200' - Sheet 16 of 16 - Ramp 1 & Ramp 2

Night work will be required for this project. Obtain the Engineer's approval on the method of lighting prior to performing night work.

During the days and hours when a lane closure is allowed, implement the following procedures:

Maintain traffic as specified in the phasing notes and MOT typical sections. Only one lane closure per direction may be in place at the same time.

The contractor must notify the Engineer at least fourteen (14) days prior to the beginning of each construction phase.

SB I-71 Closure From I-264 (Watterson Expressway) to I-265 (Gene Snyder) & Ramp 1

The Contractor shall obtain approval from the Engineer prior to beginning the following work:

All lanes of SB I-71 and Ramp 1 (I-71 SB ramp to I-264 WB) are to be closed for a period of 227 hours beginning at 8 PM on a Friday evening and are to be reopened by 7 AM of the second Monday morning following the closure. During this period, all pavement work, guardrail replacement, striping, placement of inlaid pavement markers, and any other work requiring a lane closure (except for SB I-71 over US 42 bridge work) is to be completed on SB I-71 and Ramp 1, including the bridge work on Ramp 1. No additional lane closures will be permitted in this area, except for the times during which the SB I-71 bridge repairs are being performed as described elsewhere in these notes.

Detour signing for the closure shall be performed by the Contractor. The Contractor will provide detour signing plans to the Engineer prior to placement. Payment will be made for the signs at the unit bid price for Item No. 2562 Temporary Signs. All other costs associated with signing the detour will be considered incidental to Item No. 2650 Maintain And Control Traffic.

NB I-71, SB I-71 From Begin Project To I-264 (Watterson Expressway), And Ramp 2

Nightly lane closures will be permitted to begin at 8 PM and all lanes are to be reopened by 7 AM the following morning during the following phases which are shown in detail in the MOT Typical Sections:

PHASE 1 (Two Lanes Roadways)

Use a lane closure to close the inside lane and shift all traffic to the outside lane. Mill 2 inches of pavement off the inside lane and inside shoulder. Place 2 inches of surface pavement on the milled lane and shoulder. Replace any striping removed with the appropriate color temporary striping after milling and surfacing prior to opening the inside lane to traffic.

PHASE 1 (Three Lanes Roadways)

Use a lane closure to close the inside lane and reduce traffic to two lanes, maintain traffic on the center and outside lanes. Mill 2 inches of pavement off the center lane, inside lane and inside shoulder. Place 2 inches of surface pavement on the milled lanes and shoulder. All work in the

**JEFFERSON COUNTY - ESTIMATE OF QUANTITIES
SOUTHBOUND 1-71 OVER US 42 (056B00059L) BRIDGE REHAB
JEFFERSON COUNTY ITEM NO. 5-20014.00
SOUTHBOUND SUMMARY OF ESTIMATE OF QUANTITIES**

ITEM NUMBER	DESCRIPTION	QUANTITY	UNIT
8534	CONCRETE OVERLAY-LATEX (2")	47.1	CUYD
8526	CONCRETE CLASS M FULL DEPTH PATCH	12	CUYD
24094EC	PARTIAL DEPTH PATCHING	11	CUYD
8151	STEEL REINFORCEMENT EPOXY COATED	200	LBS
8435	JACK AND SUPPORT BRIDGE SPAN	1	LS
21969NN	BEARING REPLACEMENT	8	EACH
23386EC	JOINT SEAL REPLACEMENT (1")	84	LF
8504	EPOXY SAND SLURRY	114	SQYD
8106	CONCRETE CLASS "M 1" REPLACE PEDESTAL	1	CUYD
2403	REMOVE CONCRETE MASONRY	1	CUYD
8510	REMOVE EPOXY BIT FOREIGN OVERLAY	849	SQYD
8549	BLAST CLEANING	963	SQYD

**JEFFERSON COUNTY - ESTIMATE OF QUANTITIES
NOUTHBOUND 1-71 OVER US 42 (056B00059R) BRIDGE REHAB
JEFFERSON COUNTY ITEM NO. 5-20014.00
NORTHBOUND SUMMARY OF ESTIMATE OF QUANTITIES**

ITEM NUMBER	DESCRIPTION	QUANTITY	UNIT
8534	CONCRETE OVERLAY-LATEX (2")	49.7	CUYD
8526	CONCRETE CLASS M FULL DEPTH PATCH	13	CUYD
24094EC	PARTIAL DEPTH PATCHING	12	CUYD
8151	STEEL REINFORCEMENT EPOXY COATED	200	LBS
8435	JACK AND SUPPORT BRIDGE SPAN	1	LS
21969NN	BEARING REPLACEMENT	8	EACH
23386EC	JOINT SEAL REPLACEMENT (1")	84	LF
8504	EPOXY SAND SLURRY	120	SQYD
8510	REMOVE EPOXY BIT FOREIGN OVERLAY	896	SQYD
8549	BLAST CLEANING	1016	SQYD

**JEFFERSON COUNTY - ESTIMATE OF QUANTITIES
SOUTHBOUND 1-71 RAMP OVER I-71 NORTHBOUND (056B00056N) BRIDGE REHAB
JEFFERSON COUNTY ITEM NO. 5-20014.00
SUMMARY OF ESTIMATE OF QUANTITIES**

ITEM NUMBER	DESCRIPTION	QUANTITY	UNIT
8534	CONCRETE OVERLAY-LATEX (2")	20.8	CUYD
8526	CONCRETE CLASS M FULL DEPTH PATCH	6	CUYD
24094EC	PARTIAL DEPTH PATCHING	5	CUYD
8151	STEEL REINFORCEMENT EPOXY COATED	200	LBS
8160	STRUCTURAL STEEL (SEE NOTE 1)	1	LS
23386EC	JOINT SEAL REPLACEMENT (2")	67	LF
8504	EPOXY SAND SLURRY	47	SQYD
8510	REMOVE EPOXY BIT FOREIGN OVERLAY	375	SQYD
8549	BLAST CLEANING	422	SQYD

NOTE 1: INCIDENTAL ITEMS INCLUDE: STRUCTURAL STEEL, ANCHOR BOLTS, DRILLING AND GROUTING OF ANCHOR BOLTS AND HOT-DIPPED GALVANIZING OF NEW ELEMENTS

IV. MEASUREMENT. See Section 606 and the following:

A. Latex Modified Concrete for Overlay. The Department will measure the quantity in cubic yards using the theoretical volume as follows for each bridge:

056B00059L	(255' x 30' x 2"/12)/27	= 47.1 CU YD
056B00059R	(267' x 30' x 2"/12)/27	= 49.7 CU YD
056B00056N	(105'-6" x 32' x 2"/12)/27	= 20.8 CU YD

B. Latex Modified Concrete for Partial Depth Patching and variable thickness of Overlay. The Department will measure the quantity in cubic yards by deducting the theoretical volume of bridge deck overlay (LMC) from the total volume (as indicated by the batch quantity tickets) of Concrete required to obtain the finished grade shown on the Plans or established by the Engineer.

C. Remove Existing Overlay. The Department will measure the removal of the existing overlay in square yards, which shall include all labor, equipment, and material needed to complete this work.

D. Steel Reinforcement. The Department will measure any reinforcing steel necessary for the partial or full depth patch in pounds, which shall include all labor, equipment, and material needed to complete this work.

V. PAYMENT. See Section 606 and the following:

A. Latex Modified Concrete for Overlay. The Department will make payment for the Latex Modified Concrete under bid item #08534 "CONCRETE OVERLAY – LATEX" for the theoretical quantity.

B. Latex Modified Concrete for Partial Depth Patching and variable thickness of Overlay. The Department will make payment for the Partial Depth Patching under bid item #24094EC "PARTIAL DEPTH PATCHING". Payment will be for the quantity per cubic yard complete in place.

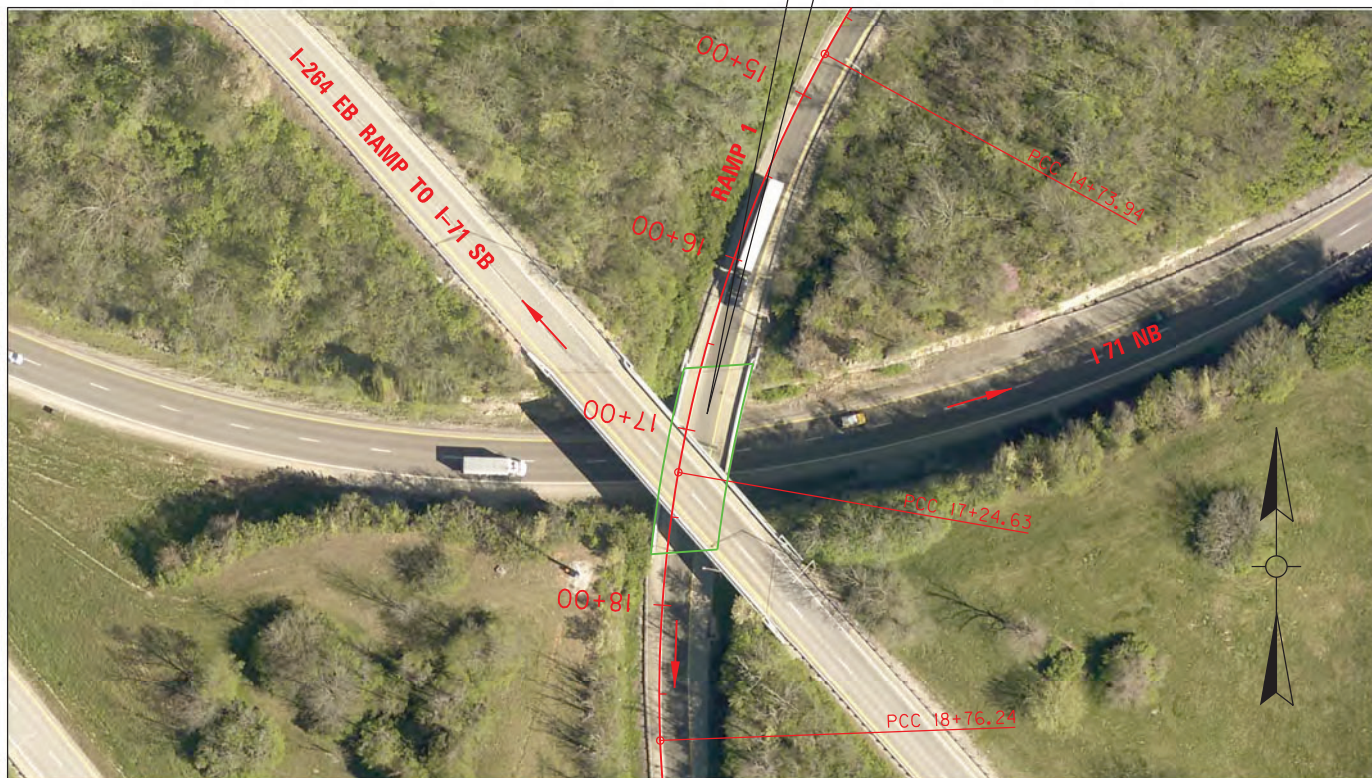
C. Remove Existing Overlay. The Department will make payment for the removal of the existing overlay under the bid item #08510 "REM EPOXY BIT FOREIGN OVERLAY". Payment will be for the square yard complete.

D. Steel Reinforcement. The Department will make payment for steel reinforcement, if necessary, under bid item #08150 "STEEL REINFORCEMENT". Payment will be at the unit price per pound.

E. Class M Concrete for Full-Depth Patching. The Department will make payment for the Full-Depth Patching under bid item #08526 "Class "M" Concrete for FULL DEPTH PATCHING". Payment will be for the quantity per cubic yard complete in place.

BRIDGE #3 (056B00056N) JEFFERSON COUNTY

056B00056N
I-71 SB RAMP
OVER I-71 NB
(RAMP 1)



APPROXIMATE LOCATION INFORMATION

LATITUDE: 38° 17' 19"

LONGITUDE: 85° 38' 46"

MP 0.193 ON I-71 SB RAMP TO I-264 (RAMP 1)

BRIDGE NO.
056B00056N

ITEM NUMBER
5-20014.00

Commonwealth of Kentucky DEPARTMENT OF HIGHWAYS
COUNTY JEFFERSON
BRIDGE REHABILITATION
PREPARED BY DLZ INNOVATIVE IDEAS EXCEPTIONAL DESIGN UNMATCHED CLIENT SERVICE

B3

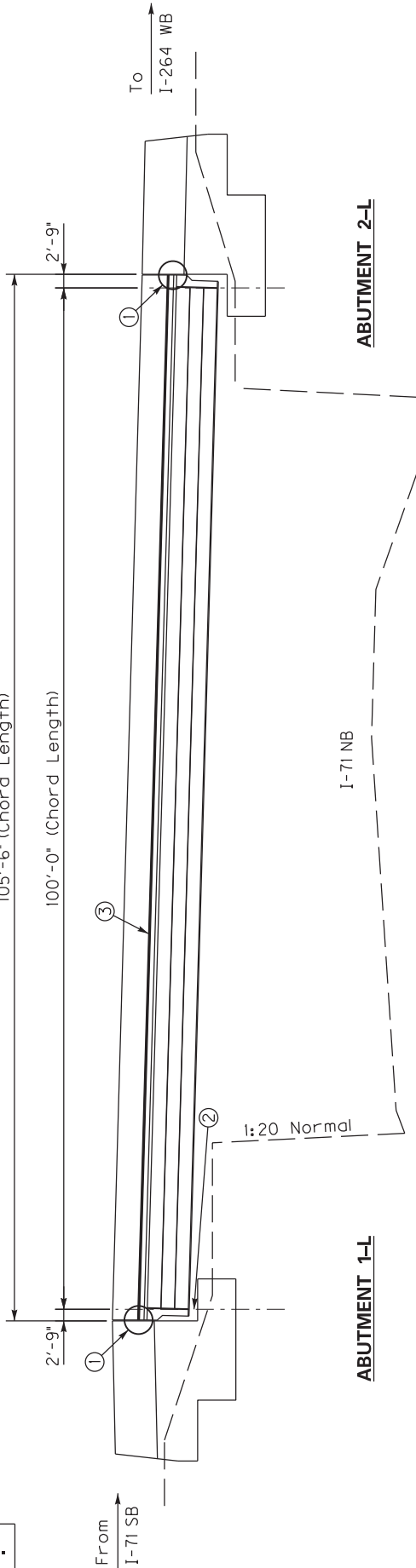
- ① Replace Joint Seal
- ② Install Bearing Clips (See Detail on Next Page)
- ③ Install 2" Latex Concrete Overlay (Applies to Deck and Top of Backwall)
- ④ Epoxy Sand Slurry

BRIDGE NO.
056B00056N

RAMP 1

105'-6" (Chord Length)

100'-0" (Chord Length)

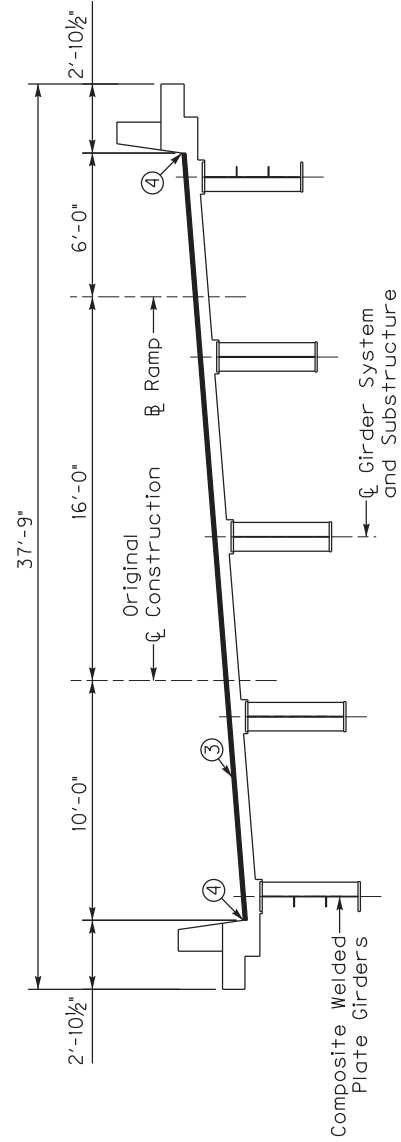


ABUTMENT 1-L

I-71 NB

ABUTMENT 2-L

ELEVATION
16° 30' Skew L.T.
(Not to Scale)



TYPICAL SECTION

See Special Note for Joint Seal Replacement and for Latex Concrete Overlay

ITEM NUMBER	5-20014.00
-------------	------------

Commonwealth of Kentucky DEPARTMENT OF HIGHWAYS	
COUNTY JEFFERSON	
BRIDGE REHABILITATION	
PREPARED BY DLZ ARCHITECTURE • ENGINEERING • PLANNING SURVEYING • CONSTRUCTION SERVICES	INNOVATIVE IDEAS EXCEPTIONAL DESIGN UNMATCHED CLIENT SERVICE

PROPOSAL BID ITEMS

Report Date 5/11/22

Section: 0001 - PAVING

LINE	BID CODE	ALT	DESCRIPTION	QUANTITY	UNIT	UNIT PRIC	FP	AMOUNT
0010	00001		DGA BASE	5,749.00	TON		\$	
0020	00100		ASPHALT SEAL AGGREGATE	658.00	TON		\$	
0030	00103		ASPHALT SEAL COAT	79.00	TON		\$	
0040	00194		LEVELING & WEDGING PG76-22	200.00	TON		\$	
0050	00219		CL4 ASPH BASE 1.00D PG76-22	7,285.00	TON		\$	
0060	00339		CL3 ASPH SURF 0.38D PG64-22	4,659.00	TON		\$	
0070	00342		CL4 ASPH SURF 0.38A PG76-22	20,557.00	TON		\$	
0080	02676		MOBILIZATION FOR MILL & TEXT	1.00	LS		\$	
0090	02677		ASPHALT PAVE MILLING & TEXTURING	32,501.00	TON		\$	
0100	20071EC		JOINT ADHESIVE	126,837.00	LF		\$	
0110	20362ES403		SHOULDER RUMBLE STRIPS-SAWED	109,520.00	LF		\$	
0120	24785EC		FIBER REINFORCEMENT FOR HMA	20,557.00	TON		\$	
0130	24891EC		PAVE MOUNT INFRARED TEMP EQUIPMENT	1,985,841.00	SF		\$	
0140	24970EC		ASPHALT MATERIAL FOR TACK NON-TRACKING	98.00	TON		\$	

Section: 0002 - ROADWAY

LINE	BID CODE	ALT	DESCRIPTION	QUANTITY	UNIT	UNIT PRIC	FP	AMOUNT
0150	01897		ASPHALT WEDGE CURB	809.00	LF		\$	
0160	01982		DELINEATOR FOR GUARDRAIL MONO DIRECTIONAL WHITE	312.00	EACH		\$	
0170	01983		DELINEATOR FOR GUARDRAIL MONO DIRECTIONAL YELLOW	78.00	EACH		\$	
0180	01984		DELINEATOR FOR BARRIER - WHITE	61.00	EACH		\$	
0190	01985		DELINEATOR FOR BARRIER - YELLOW	61.00	EACH		\$	
0200	02003		RELOCATE TEMP CONC BARRIER	1,100.00	LF		\$	
0210	02220		FLOWABLE FILL	1.00	CUYD		\$	
0220	02351		GUARDRAIL-STEEL W BEAM-S FACE	2,787.50	LF		\$	
0230	02352		GUARDRAIL-STEEL W BEAM-D FACE	412.50	LF		\$	
0240	02363		GUARDRAIL CONNECTOR TO BRIDGE END TY A	8.00	EACH		\$	
0250	02365		CRASH CUSHION TYPE IX-A	3.00	EACH		\$	
0260	02367		GUARDRAIL END TREATMENT TYPE 1	2.00	EACH		\$	
0270	02369		GUARDRAIL END TREATMENT TYPE 2A	34.00	EACH		\$	
0280	02373		GUARDRAIL END TREATMENT TYPE 3	1.00	EACH		\$	
0290	02381		REMOVE GUARDRAIL	22,569.10	LF		\$	
0300	02387		GUARDRAIL CONNECTOR TO BRIDGE END TY A-1	1.00	EACH		\$	
0310	02391		GUARDRAIL END TREATMENT TYPE 4A	5.00	EACH		\$	
0320	02483		CHANNEL LINING CLASS II	234.00	TON		\$	
0330	02562		TEMPORARY SIGNS	1,500.00	SQFT		\$	
0340	02565		OBJECT MARKER TYPE 2	6.00	EACH		\$	
0350	02575		DITCHING AND SHOULDERING	28,497.00	LF		\$	
0360	02650		MAINTAIN & CONTROL TRAFFIC	1.00	LS		\$	
0370	02671		PORTABLE CHANGEABLE MESSAGE SIGN	6.00	EACH		\$	
0380	02704		SILT TRAP TYPE B	5.00	EACH		\$	

PROPOSAL BID ITEMS

Report Date 5/11/22

LINE	BID CODE	ALT	DESCRIPTION	QUANTITY	UNIT	UNIT PRIC	FP	AMOUNT
0390	02705		SILT TRAP TYPE C	5.00	EACH		\$	
0400	02726		STAKING	1.00	LS		\$	
0410	02775		ARROW PANEL	4.00	EACH		\$	
0420	02898		RELOCATE CRASH CUSHION	2.00	EACH		\$	
0430	02929		CRASH CUSHION TYPE IX	8.00	EACH		\$	
0440	03171		CONCRETE BARRIER WALL TYPE 9T	1,100.00	LF		\$	
0450	03260		CLEAN ROADWAY DRAINS	5.00	EACH		\$	
0460	05950		EROSION CONTROL BLANKET	5,000.00	SQYD		\$	
0470	06401		FLEXIBLE DELINEATOR POST-M/W	664.00	EACH		\$	
0480	06404		FLEXIBLE DELINEATOR POST-M/Y	53.00	EACH		\$	
0490	06511		PAVE STRIPING-TEMP PAINT-6 IN	88,299.00	LF		\$	
0500	06542		PAVE STRIPING-THERMO-6 IN W	72,433.00	LF		\$	
0510	06543		PAVE STRIPING-THERMO-6 IN Y	55,278.00	LF		\$	
0520	06546		PAVE STRIPING-THERMO-12 IN W	1,660.00	LF		\$	
0530	06549		PAVE STRIPING-TEMP REM TAPE-B	10,000.00	LF		\$	
0540	06550		PAVE STRIPING-TEMP REM TAPE-W	5,000.00	LF		\$	
0550	06551		PAVE STRIPING-TEMP REM TAPE-Y	5,000.00	LF		\$	
0560	06556		PAVE STRIPING-DUR TY 1-6 IN W	755.00	LF		\$	
0570	06557		PAVE STRIPING-DUR TY 1-6 IN Y	625.00	LF		\$	
0580	06613		INLAID PAVEMENT MARKER-B W/R	935.00	EACH		\$	
0590	06614		INLAID PAVEMENT MARKER-B Y/R	33.00	EACH		\$	
0600	08903		CRASH CUSHION TY VI CLASS BT TL3	2.00	EACH		\$	
0610	10020NS		FUEL ADJUSTMENT	30,022.00	DOLL	\$1.00	\$	\$30,022.00
0620	10030NS		ASPHALT ADJUSTMENT	58,862.00	DOLL	\$1.00	\$	\$58,862.00
0630	20411ED		LAW ENFORCEMENT OFFICER	250.00	HOURL		\$	
0640	21802EN		G/R STEEL W BEAM-S FACE (7 FT POST)	18,537.50	LF		\$	
0650	25075EC		QUEUE PROTECTION VEHICLE	400.00	HOURL		\$	
0660	25117EC		FURNISH QUEUE PROTECTION VEHICLES	8.00	MONT		\$	
0670	26136EC		PORTABLE QUEUE WARNING ALERT SYSTEM	8.00	MONT		\$	
0680	26137EC		QUEUE WARNING PCMS	48.00	MONT		\$	
0690	26138EC		QUEUE WARNING PORTABLE RADAR SENSORS	48.00	MONT		\$	

Section: 0003 - BRIDGE NO. 056B00056N - 1-71 SB RAMP BRIDGE OVER I-71 NB

LINE	BID CODE	ALT	DESCRIPTION	QUANTITY	UNIT	UNIT PRIC	FP	AMOUNT
0700	08151		STEEL REINFORCEMENT-EPOXY COATED (ADDED 5-11-22)	200.00	LB		\$	
0710	08160		STRUCTURAL STEEL See Note in Proposal (ADDED 5-11-22)	1.00	LS		\$	
0720	08504		EPOXY SAND SLURRY (ADDED 5-11-22)	47.00	SQYD		\$	
0730	08510		REM EPOXY BIT FOREIGN OVERLAY (ADDED 5-11-22)	375.00	SQYD		\$	
0740	08526		CONC CLASS M FULL DEPTH PATCH (ADDED 5-11-22)	6.00	CUYD		\$	
0750	08534		CONCRETE OVERLAY-LATEX (ADDED 5-11-22)	20.80	CUYD		\$	

PROPOSAL BID ITEMS

Report Date 5/11/22

LINE	BID CODE	ALT	DESCRIPTION	QUANTITY	UNIT	UNIT PRIC	FP	AMOUNT
0760	08549		BLAST CLEANING (ADDED 5-11-22)	422.00	SQYD		\$	
0770	23386EC		JOINT SEAL REPLACEMENT (ADDED 5-11-22)	67.00	LF		\$	
0780	24094EC		PARTIAL DEPTH PATCHING (ADDED 5-11-22)	5.00	CUYD		\$	

Section: 0004 - BRIDGE NO. 056B00059L - I-71 SB BRIDGE OVER US 42

LINE	BID CODE	ALT	DESCRIPTION	QUANTITY	UNIT	UNIT PRIC	FP	AMOUNT
0790	02403		REMOVE CONCRETE MASONRY	1.00	CUYD		\$	
0800	08106		CONCRETE-CLASS M 1 REPLACE PEDESTAL	1.00	CUYD		\$	
0810	08151		STEEL REINFORCEMENT-EPOXY COATED	200.00	LB		\$	
0820	08435		JACK & SUPPORT BRIDGE SPAN	1.00	LS		\$	
0830	08504		EPOXY SAND SLURRY	114.00	SQYD		\$	
0840	08510		REM EPOXY BIT FOREIGN OVERLAY	849.00	SQYD		\$	
0850	08526		CONC CLASS M FULL DEPTH PATCH	12.00	CUYD		\$	
0860	08534		CONCRETE OVERLAY-LATEX	47.10	CUYD		\$	
0870	08549		BLAST CLEANING	963.00	SQYD		\$	
0880	21969NN		BEARING REPLACEMENT	8.00	EACH		\$	
0890	23386EC		JOINT SEAL REPLACEMENT	84.00	LF		\$	
0900	24094EC		PARTIAL DEPTH PATCHING	11.00	CUYD		\$	

Section: 0005 - BRIDGE NO. 056B00059R - I-71 NB BRIDGE OVER US 42

LINE	BID CODE	ALT	DESCRIPTION	QUANTITY	UNIT	UNIT PRIC	FP	AMOUNT
0910	08151		STEEL REINFORCEMENT-EPOXY COATED	200.00	LB		\$	
0920	08435		JACK & SUPPORT BRIDGE SPAN	1.00	LS		\$	
0930	08504		EPOXY SAND SLURRY	120.00	SQYD		\$	
0940	08510		REM EPOXY BIT FOREIGN OVERLAY	896.00	SQYD		\$	
0950	08526		CONC CLASS M FULL DEPTH PATCH	13.00	CUYD		\$	
0960	08534		CONCRETE OVERLAY-LATEX	49.70	CUYD		\$	
0970	08549		BLAST CLEANING	1,016.00	SQYD		\$	
0980	21969NN		BEARING REPLACEMENT	8.00	EACH		\$	
0990	23386EC		JOINT SEAL REPLACEMENT	84.00	LF		\$	
1000	24094EC		PARTIAL DEPTH PATCHING	12.00	CUYD		\$	

Section: 0006 - TRAFFIC PLANING LOOPS

LINE	BID CODE	ALT	DESCRIPTION	QUANTITY	UNIT	UNIT PRIC	FP	AMOUNT
1010	04793		CONDUIT-1 1/4 IN	120.00	LF		\$	
1020	04795		CONDUIT-2 IN	40.00	LF		\$	
1030	04820		TRENCHING AND BACKFILLING	140.00	LF		\$	
1040	04829		PIEZOELECTRIC SENSOR	8.00	EACH		\$	
1050	04830		LOOP WIRE	3,360.00	LF		\$	
1060	04895		LOOP SAW SLOT AND FILL	800.00	LF		\$	

PROPOSAL BID ITEMS

Report Date 5/11/22

LINE	BID CODE	ALT	DESCRIPTION	QUANTITY	UNIT	UNIT PRIC	FP	AMOUNT
1070	20359NN		GALVANIZED STEEL CABINET	4.00	EACH		\$	
1080	20360ES818		WOOD POST	8.00	EACH		\$	
1090	20391NS835		ELECTRICAL JUNCTION BOX TYPE A	4.00	EACH		\$	

Section: 0007 - DEMOBILIZATION &/OR MOBILIZATION

LINE	BID CODE	ALT	DESCRIPTION	QUANTITY	UNIT	UNIT PRIC	FP	AMOUNT
1100	02568		MOBILIZATION	1.00	LS		\$	
1110	02569		DEMOBILIZATION	1.00	LS		\$	